

Mylan Classic  
360 Southpointe Blvd.  
Canonsburg, PA 15317  
Phone: (724) 746-3535  
Fax: (724) 916-4109



## Country Music Star Joe Nichols to Perform at the Mylan Classic presented by CONSOL Energy

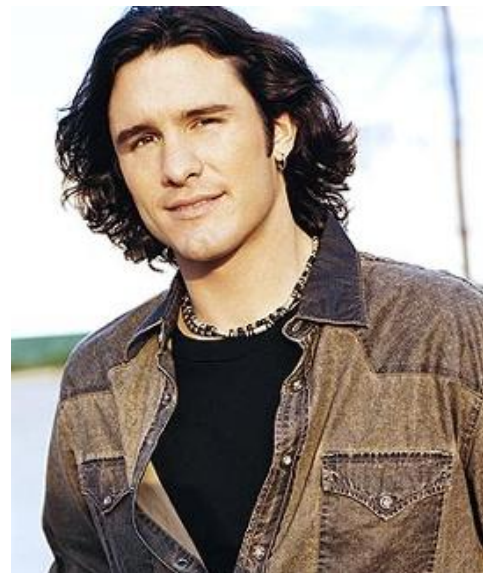
---

**For Immediate Release**  
**May 4, 2010**

CANONSBURG, PA – The Mylan Classic Presented by CONSOL Energy announced today that award-winning, Grammy-nominated Country music artist Joe Nichols, with a special guest to be announced, will perform Tuesday, August 31, at the Meadows Racetrack and Casino as part of the festivities surrounding the inaugural Mylan Classic presented by CONSOL Energy. Nichols' performance highlights day two of the Mylan Classic's seven-day schedule of events. The concert will take place on the racetrack beginning at 7:00 pm.

As a community event, the Mylan Classic presented by CONSOL Energy offers both championship golf and entertainment for the whole family. Weekly tournament tickets for the Mylan Classic presented by CONSOL Energy start at \$25, and are valid for the Joe Nichols concert as well as other evening entertainment throughout tournament week. Tickets are being sold through a unique and innovative initiative known as the ANSYS TICKETS Fore CHARITY™ program. Through this program over 100 participating non-profit organizations are selling tournament tickets and retaining 100% of the proceeds as well as a percentage of the \$25,000 bonus pool. To purchase tickets online now visit [www.MylanClassic.com](http://www.MylanClassic.com).

"We are overjoyed to announce that such an exceptional performer will be part of the inaugural Mylan Classic Presented by CONSOL Energy," said Rodney L. Piatt, president of Southpointe Golf Club. "Joe Nichols is an award-winning musician and an even better person and because of his commitment, we will be able to better assist the many worthwhile organizations in Western Pennsylvania through the ANSYS TICKETS Fore CHARITY program."



Joe Nichols earned a Grammy nomination for best country album in 2003. In 2007 his widely-acclaimed album, *Real Things*, appeared on numerous best-of-the-year lists including those published by the *New York Times*, *Associated Press*, *Miami Herald*, *Dallas Morning News*, *CMT.com*, and many others. In this

week's edition of *Billboard Magazine*, Nichols topped the country charts with his latest release, "Gimmie That Girl," from his sixth studio album "Old Things New."

"The Meadows is pleased to sponsor the inaugural Mylan Classic and host a great concert by Joe Nichols," said Meadows Vice President and General Manager Sean Sullivan. "This great concert is yet another way The Meadows provides a full-entertainment experience for our guests. We're looking forward to hearing great music and watching some of the best golfers in the world compete right here in southwestern Pennsylvania."

The Mylan Classic presented by CONSOL Energy is one of four new events on the PGA TOUR's 29-event Nationwide Tour in 2010. It will be held Aug. 30 – Sept. 5 at Southpointe Golf Club in Canonsburg, Pa. The event will draw 156 Nationwide Tour professionals from as many as 20 countries vying for one of the 25 PGA TOUR cards that will be awarded to the leading money winners at the end of the year. Also descending on Washington County during tournament week will be the players' families, caddies, Pro-Am participants, corporate guests, television crews, Tour staff members and an estimated 25,000 spectators. Golf Channel will televise all four rounds of the Mylan Classic in the United States. Internationally, it will be distributed via the PGA TOUR to 72 countries, including Japan, China, Korea, Hong Kong and parts of Europe and Latin America.

To get your charity involved in the ANSYS TICKETS Fore CHARITY program, or to receive more information contact Melissa Myler (724) 746-3535.

#### **ABOUT MYLAN**

Mylan Inc. (Nasdaq: MYL) ranks among the leading generic and specialty pharmaceutical companies in the world and provides products to customers in more than 140 countries and territories. The company maintains one of the industry's broadest and highest quality product portfolios supported by a robust product pipeline; operates one of the world's largest active pharmaceutical ingredient manufacturers; and runs a specialty business focused on respiratory, allergy and psychiatric therapies. For more information, please visit [www.mylan.com](http://www.mylan.com).

#### **ABOUT THE NATIONWIDE TOUR**

Founded (1990), owned and operated by the PGA TOUR, the Nationwide Tour identifies those players who are ready to compete and win on golf's biggest stage. As the official proving ground of the PGA TOUR, two out of three PGA TOUR members are Nationwide Tour alumni. As of the end of the 2009 official season, Tour alumni have won 270 PGA TOUR titles, including 13 majors and three PLAYERS Championships. Twenty-five PGA TOUR cards will be at stake over the course of 29 events in 2009. Recognizing the Tour's growing stature, Nationwide Insurance has renewed its umbrella sponsorship of the Nationwide Tour through 2012. The PGA TOUR, through the efforts of its three tours and their tournaments, sponsors, players and volunteers, supports over 2,000 local charities and has surpassed \$1.5 billion in charitable giving. To learn more about the PGA TOUR and Nationwide Tour and to follow the season-long quest for a PGA TOUR card, visit [www.PGATOUR.COM](http://www.PGATOUR.COM).

*For more information, contact Mylan Classic tournament director Chase McClain, (724) 746-3535.*